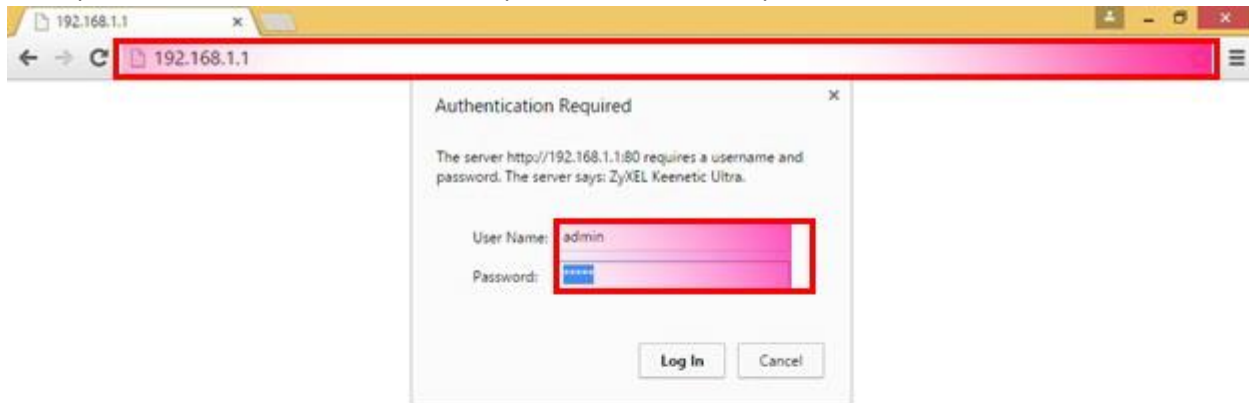


Pentru o buna functionalitate a clasei multimedia este important de indeplinit urmatoorii pasi ce tin de configurarea ruterului ,tabletelor,calculatorul profesorului si a softului NetTop Vision .

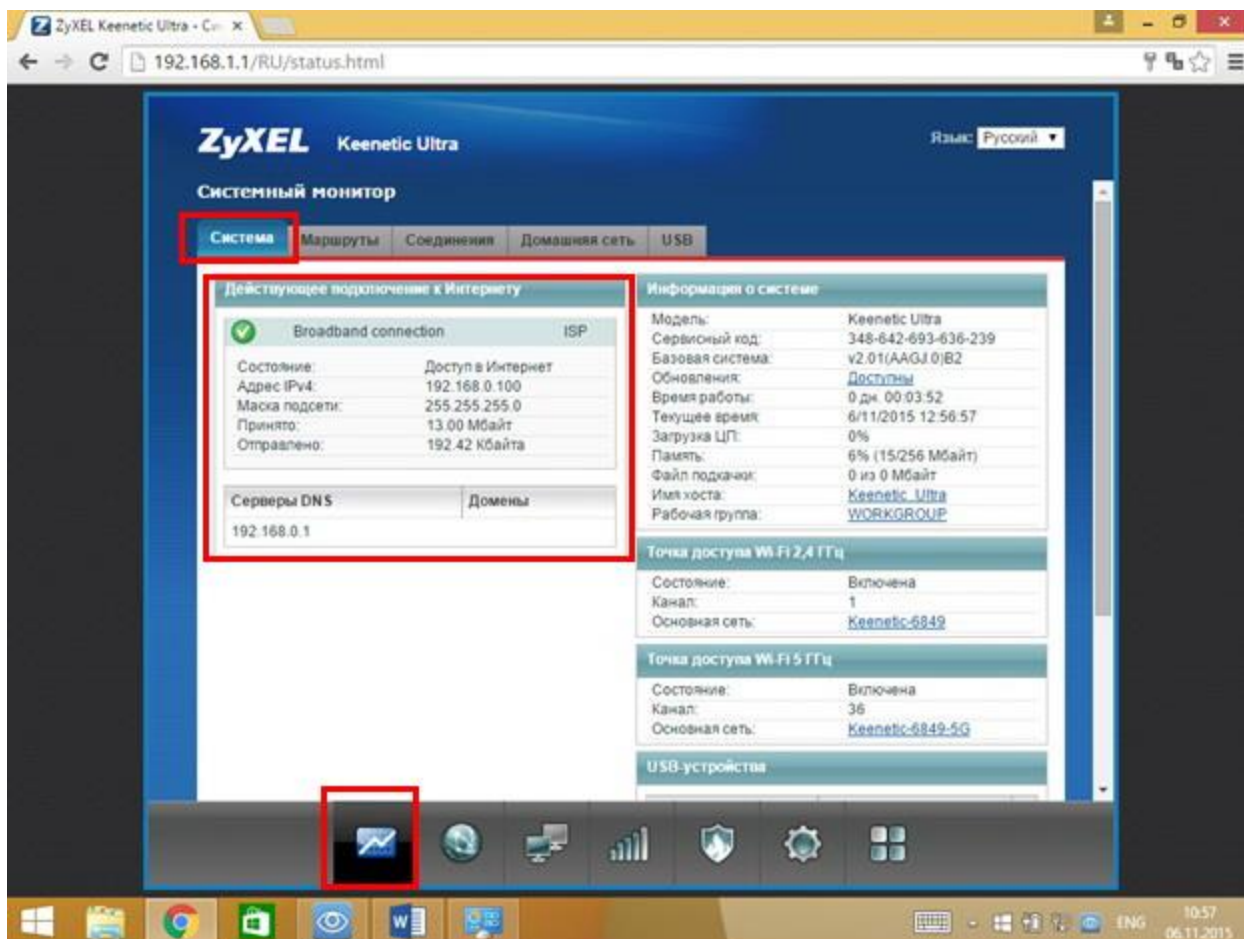
1. Setarile ruterului .

Pentru a se putea conecta toate tabletele la router este necesar de schimbat numarul maxim de conexiuni prin Wi-Fi, pentru a efectua acest lucru intram pe interfața ruterului prin intermediul browserului .

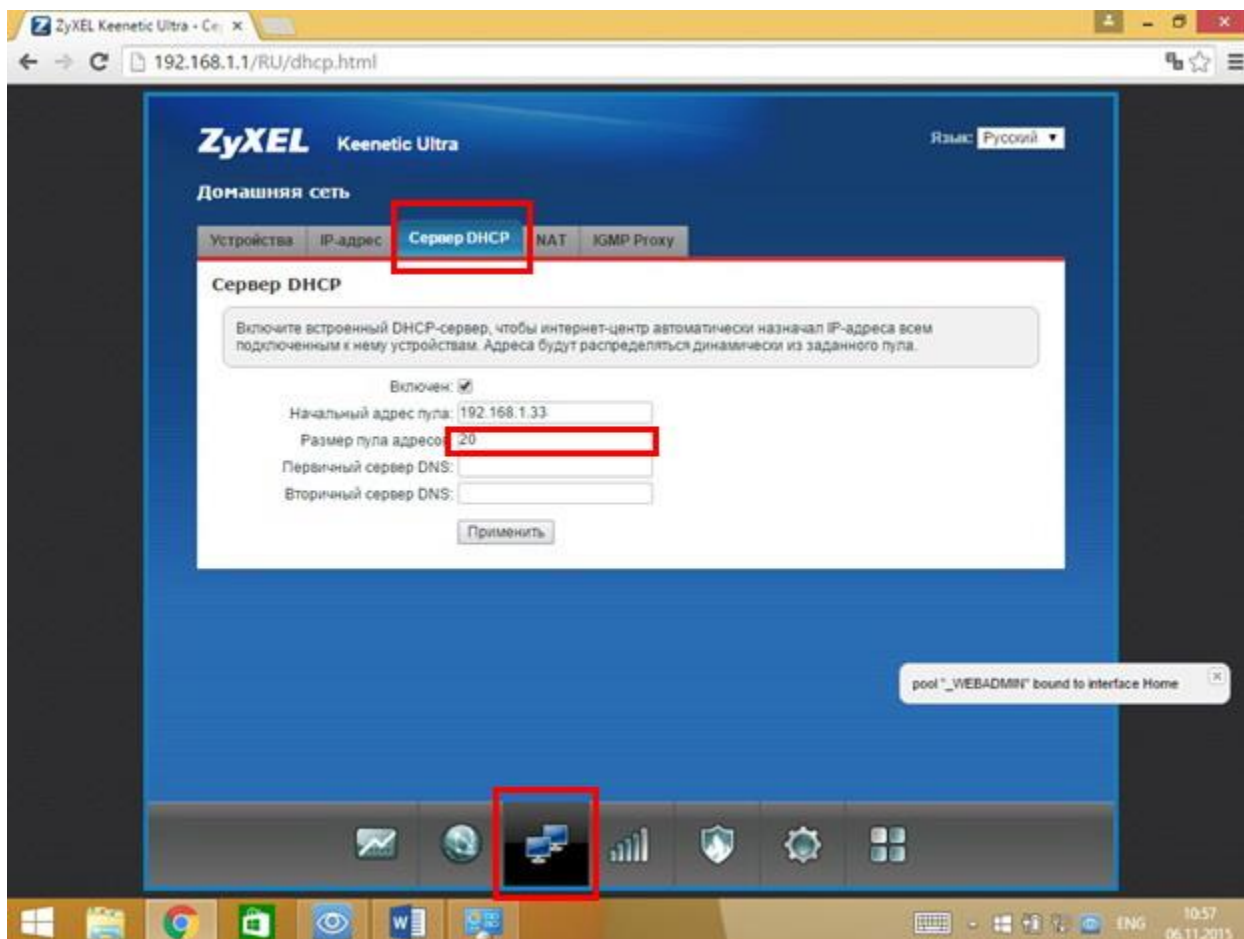


Nota : User Name-ul si Parola de regula o cunoaste administratorul clasei.

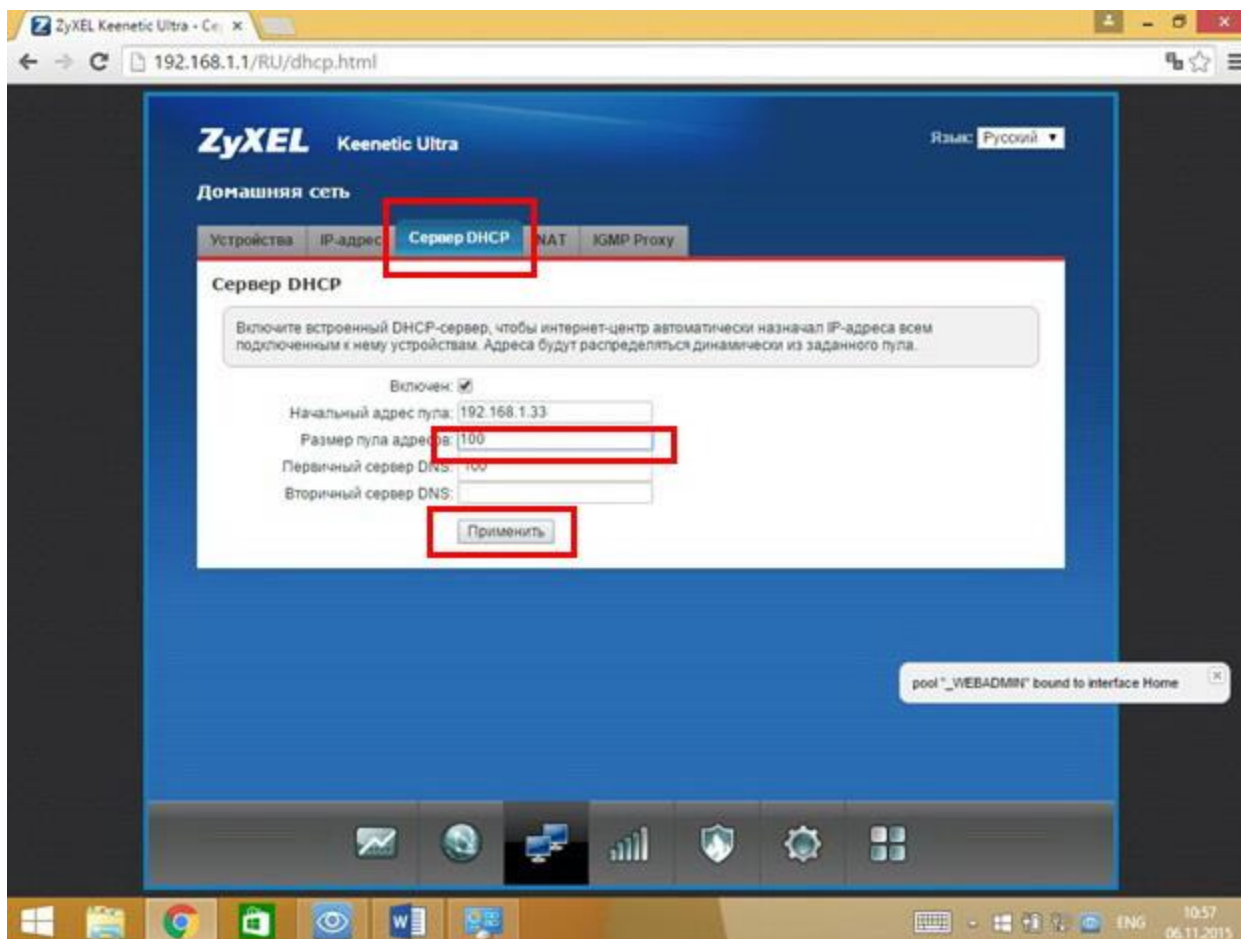
Ajungind pe interfata ne asiguram ca avem conexiune la internet .



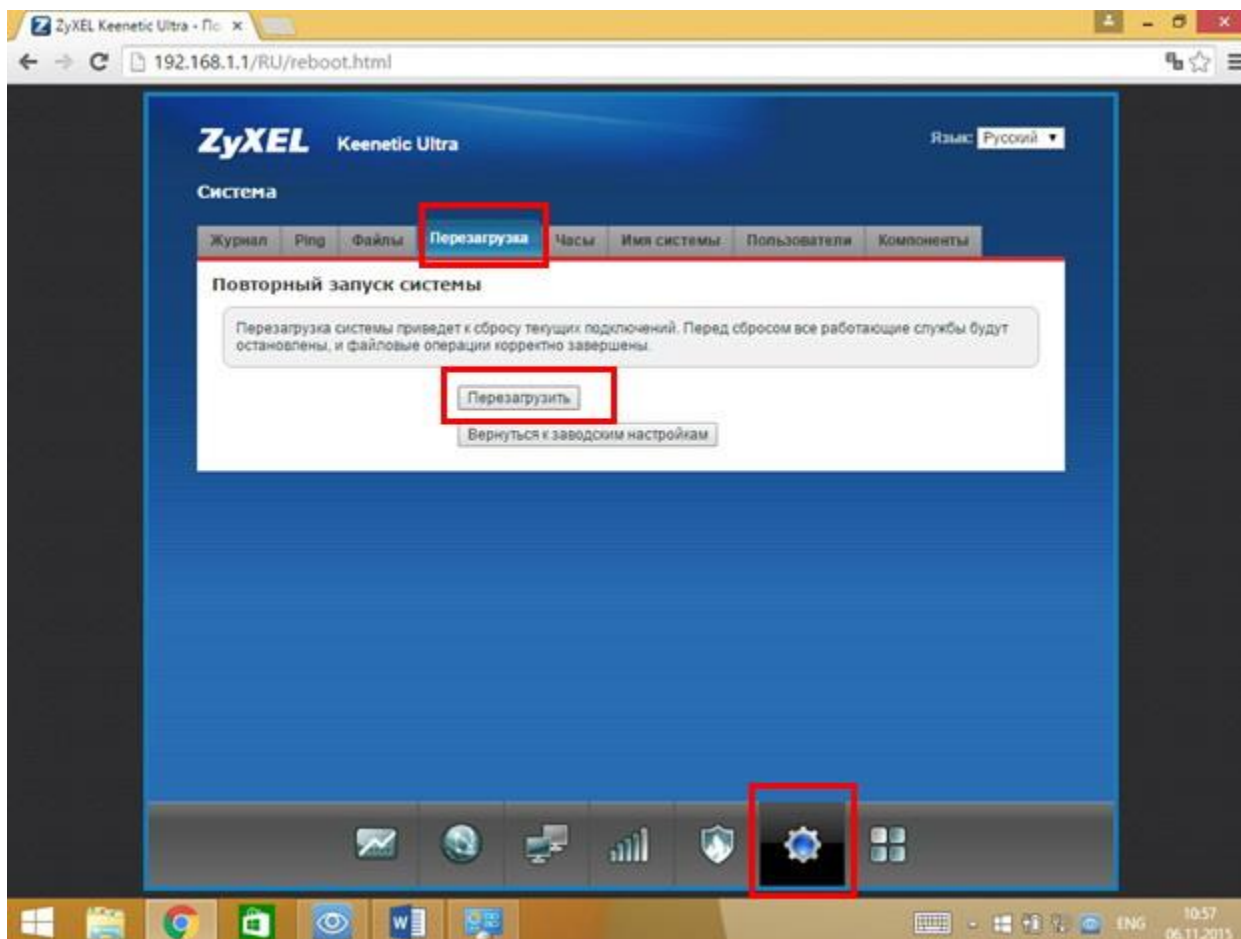
Daca lipseste conexiunea internet ne adresam la ajutorul providerului de internet !
Modificam numarul de conexiuni in felul urmator :



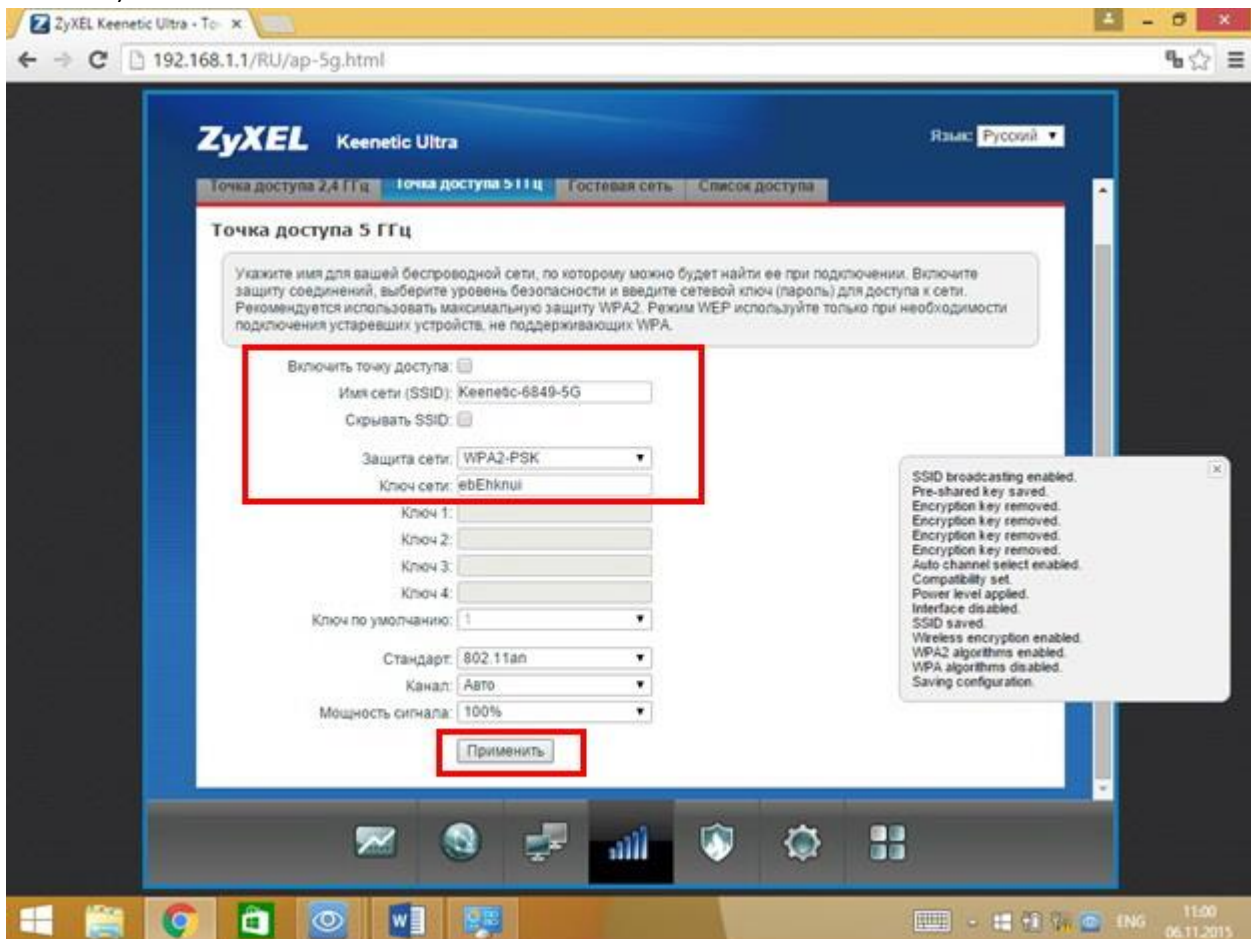
Schimbam numarul maxim 20 cu valoarea 100 (de ex.) si facem click pe salvare !



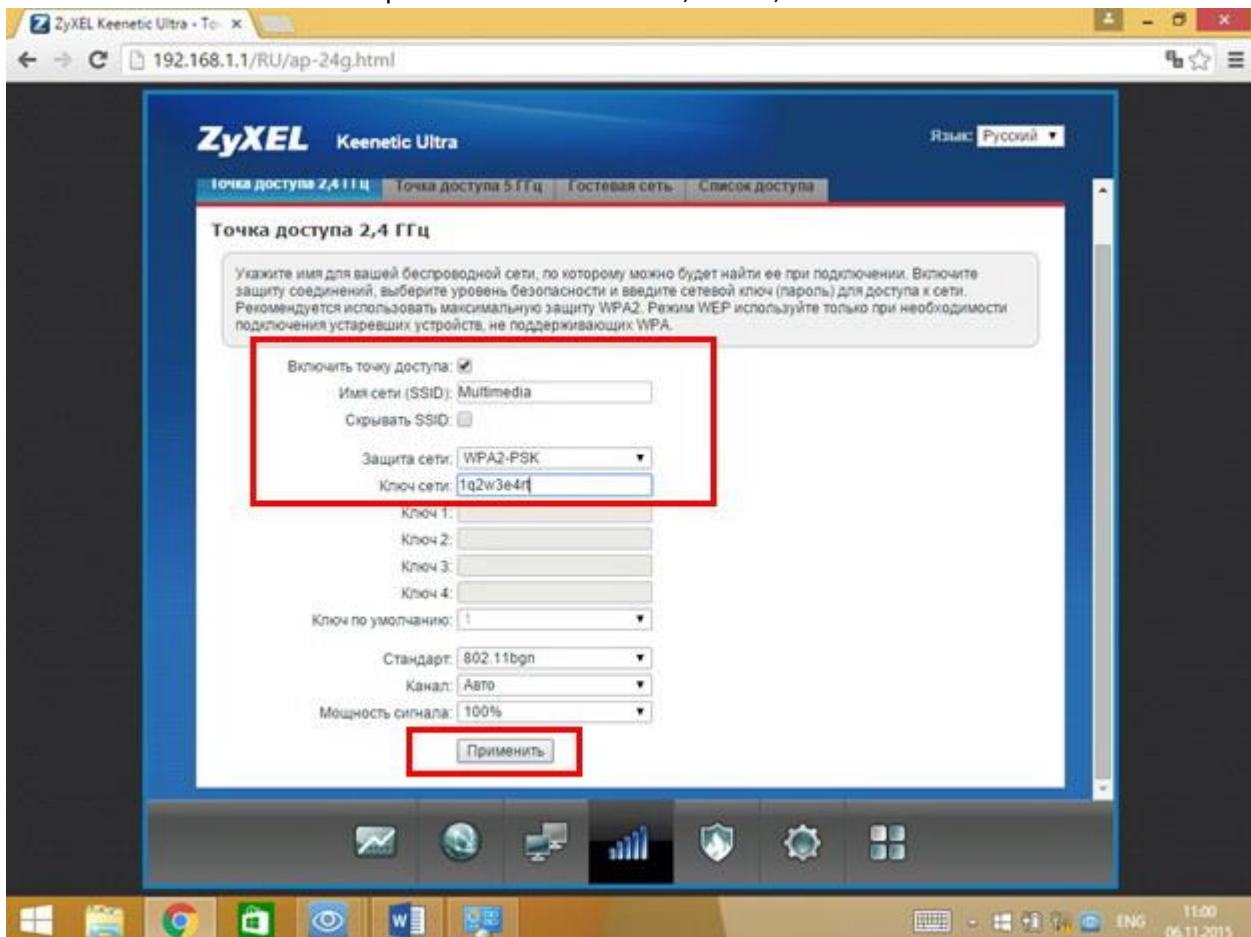
Dupa care facem un restart pentru siguranta resetarii numarului de conexiuni, asteptam restartarea!



Modificam setarile Wi-Fi in asa mod incit sa functioneze doar retea pe 2.4 Ghz (scoatem bifa de la retea de 5 Ghz si salvam).



Modificam la dorinta numele si parola retelei de 2.4 Ghz ,salvam,restartam !

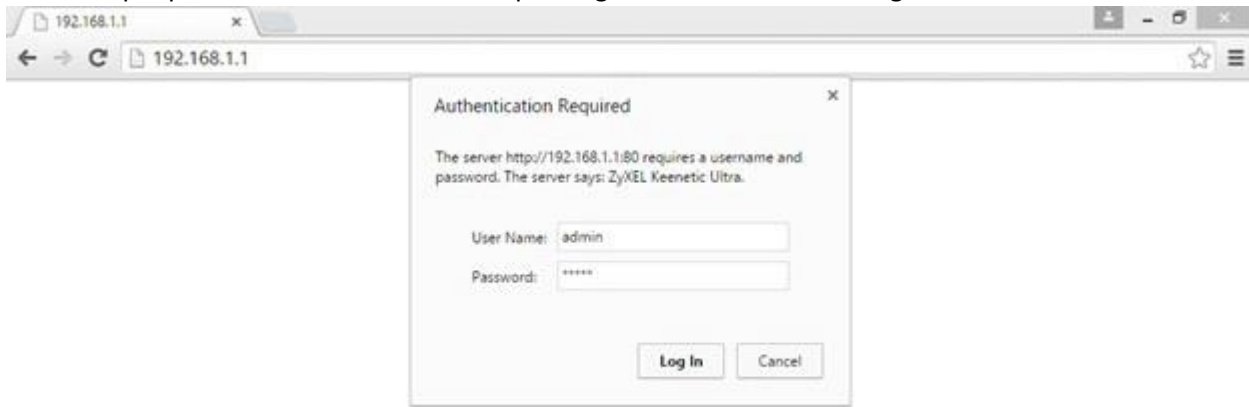


2. Setarile tabletelor.

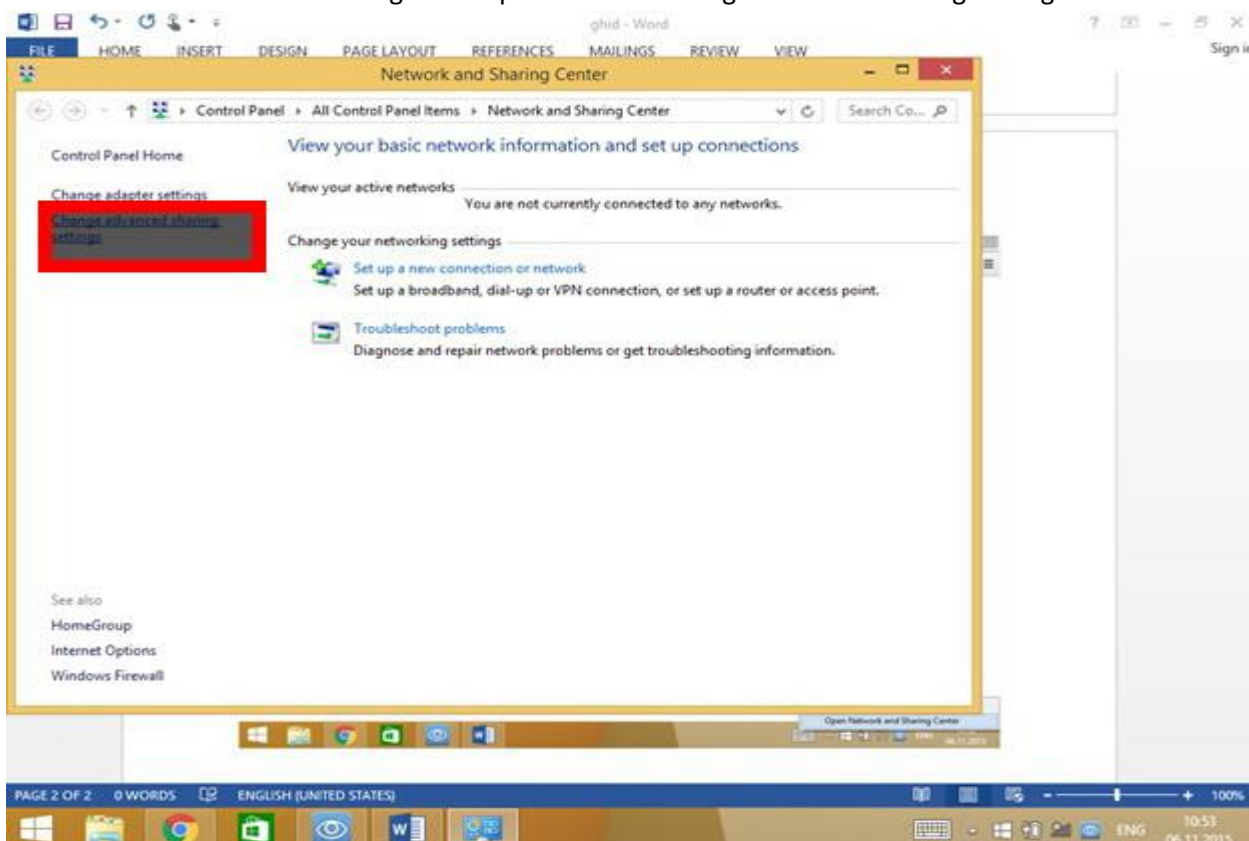
Conectam tableta la retea Wi-Fi ,gasim in lista de retele vizibile numele retelei noastre,o alegem introducem parola ,dam click pe connect !

Modificam setarile de Network and Sharing Center astfel incit tableta sa fie vizibila in retea !

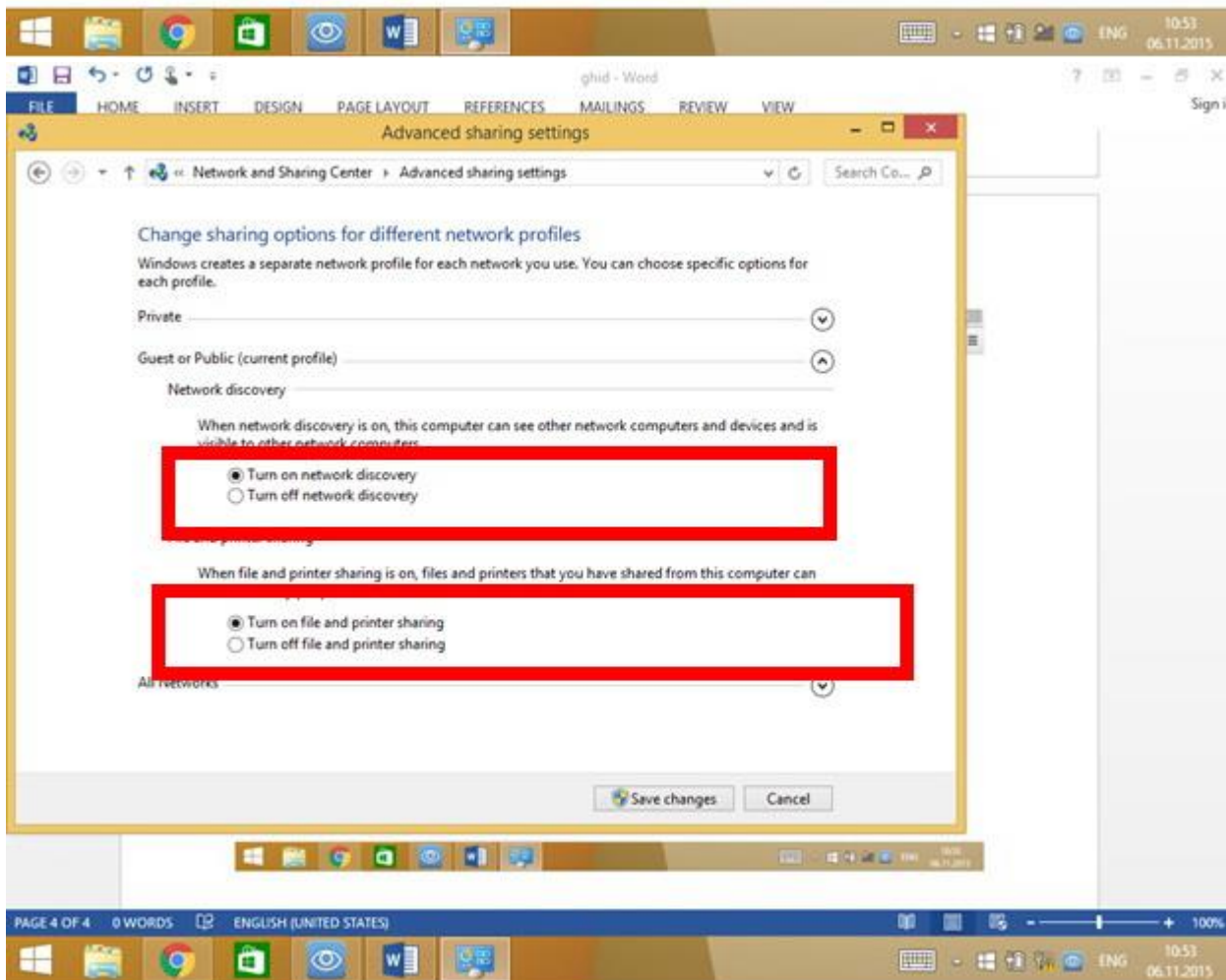
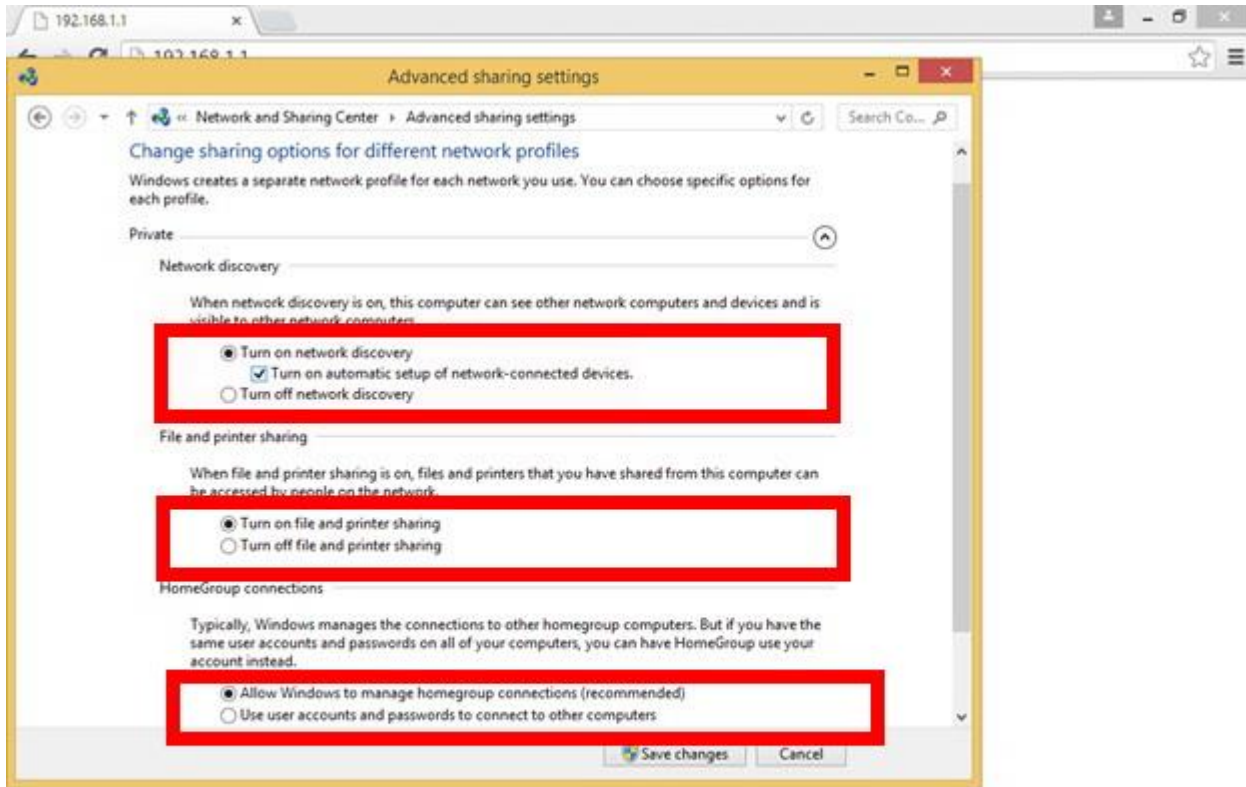
Click dreapta pe iconita cu antenna Wi-Fi apoi alegem Network and Sharing Center.

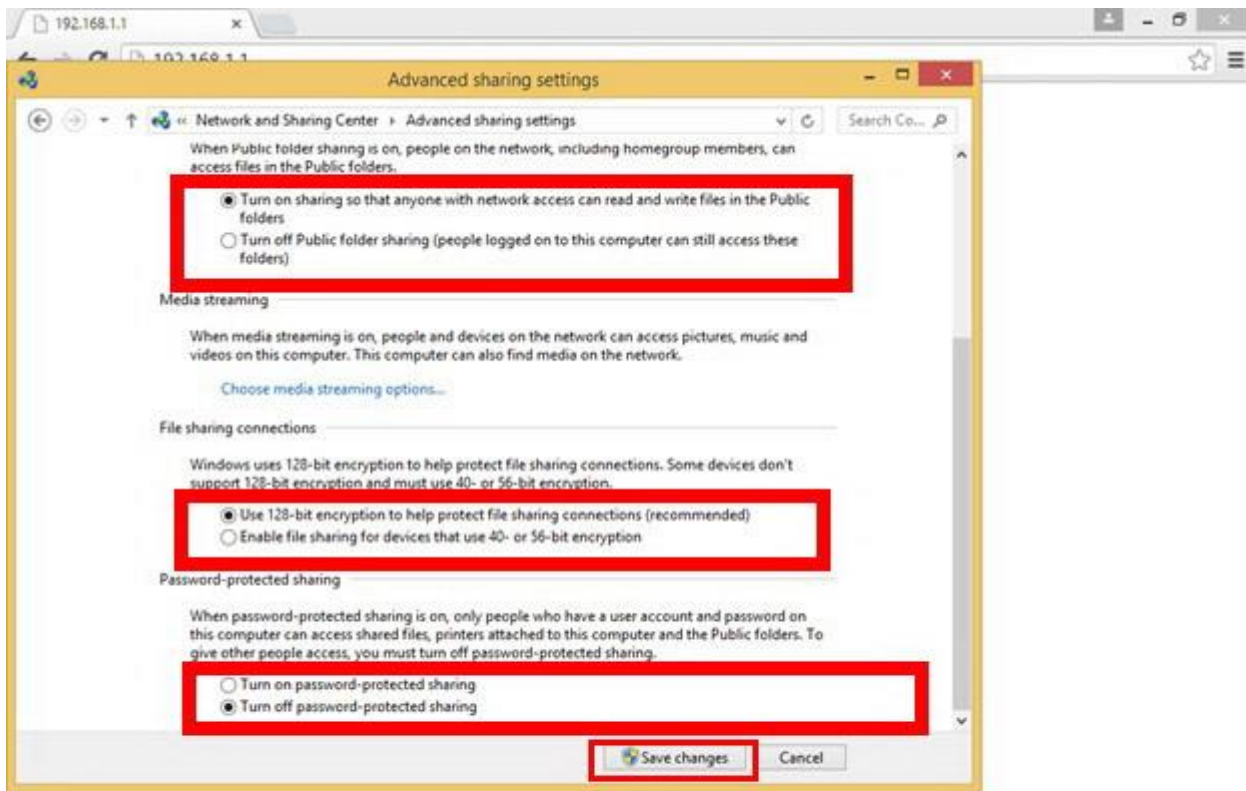


In fereastra care se deschide alegem compartimentul : Change advanced sharing settings!

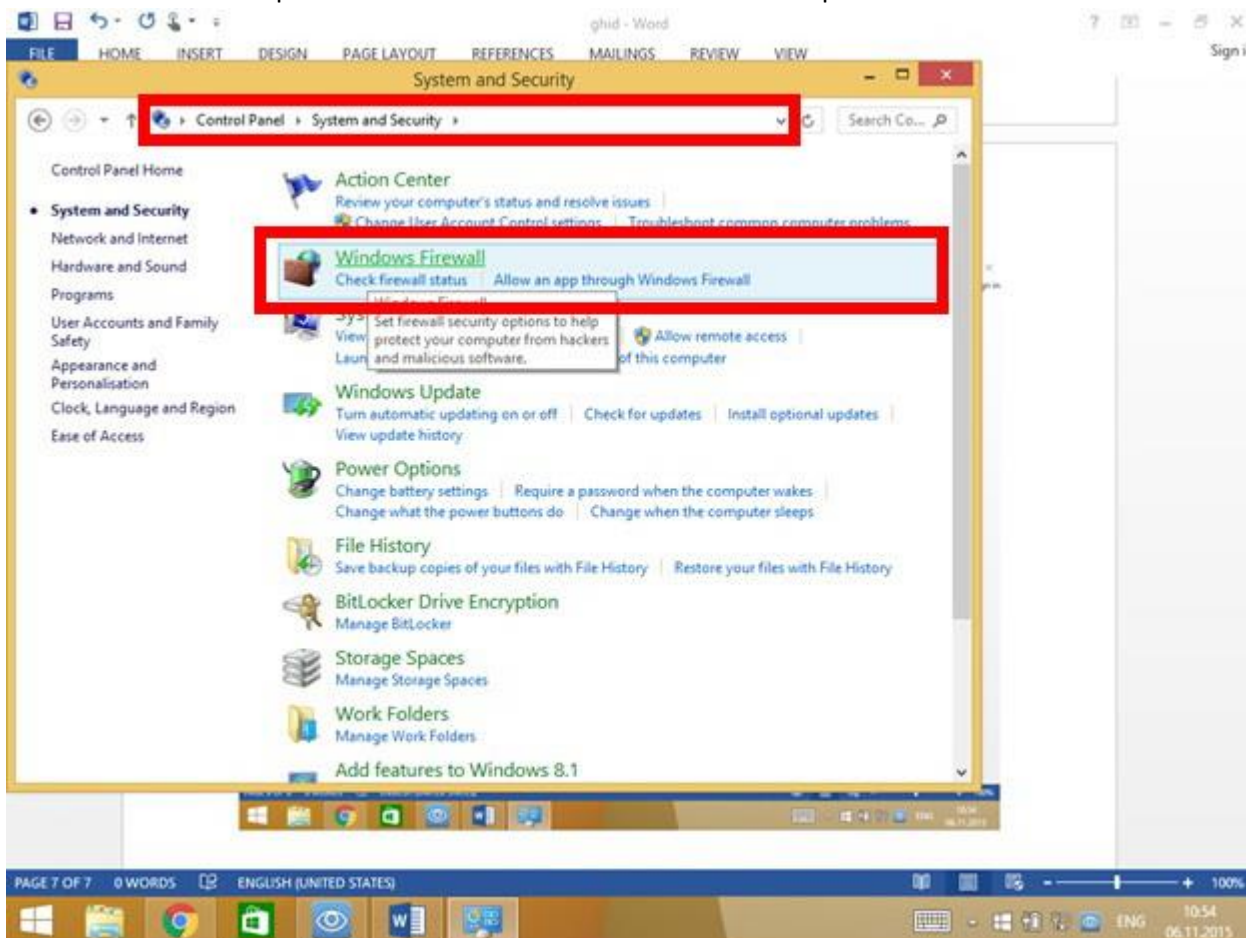


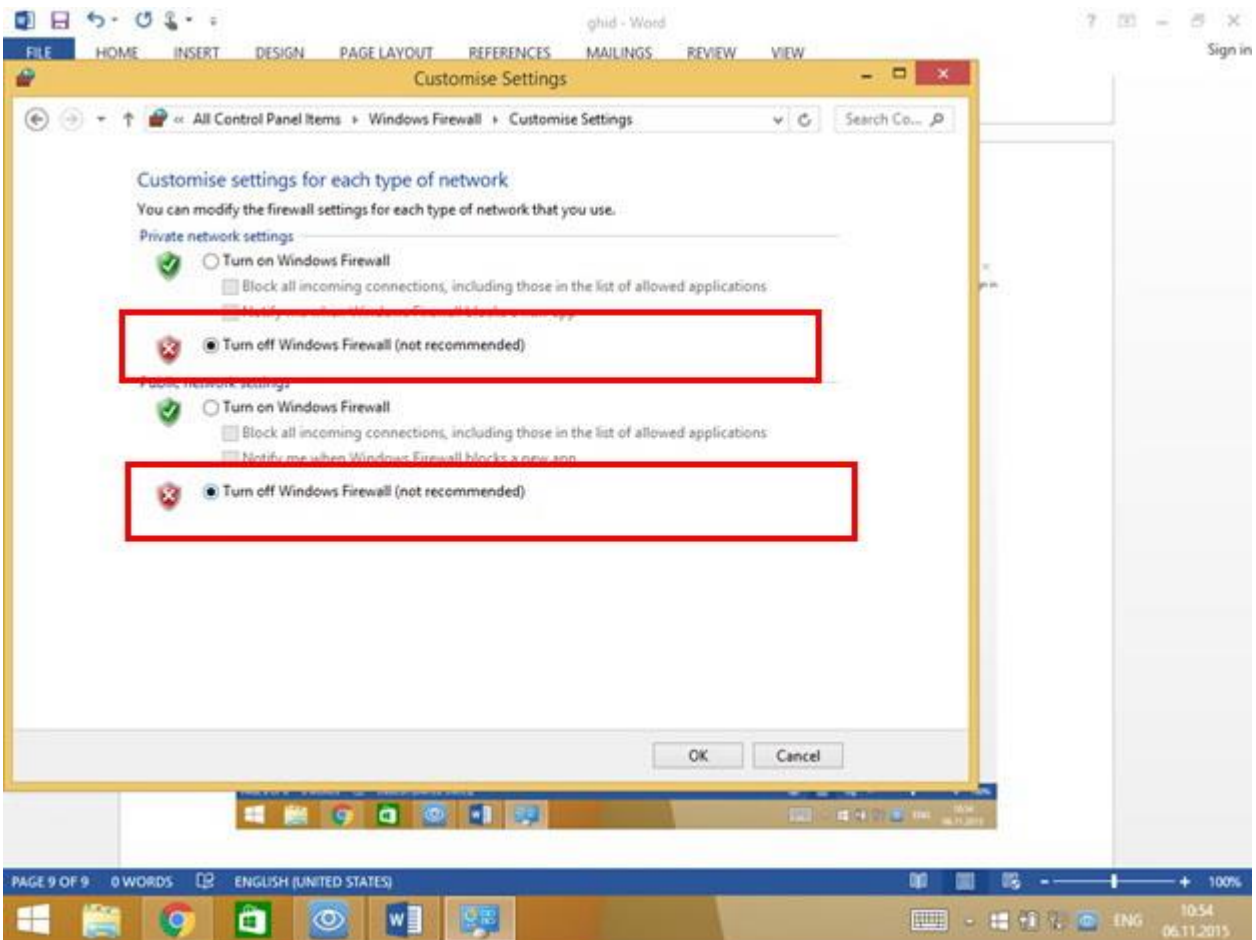
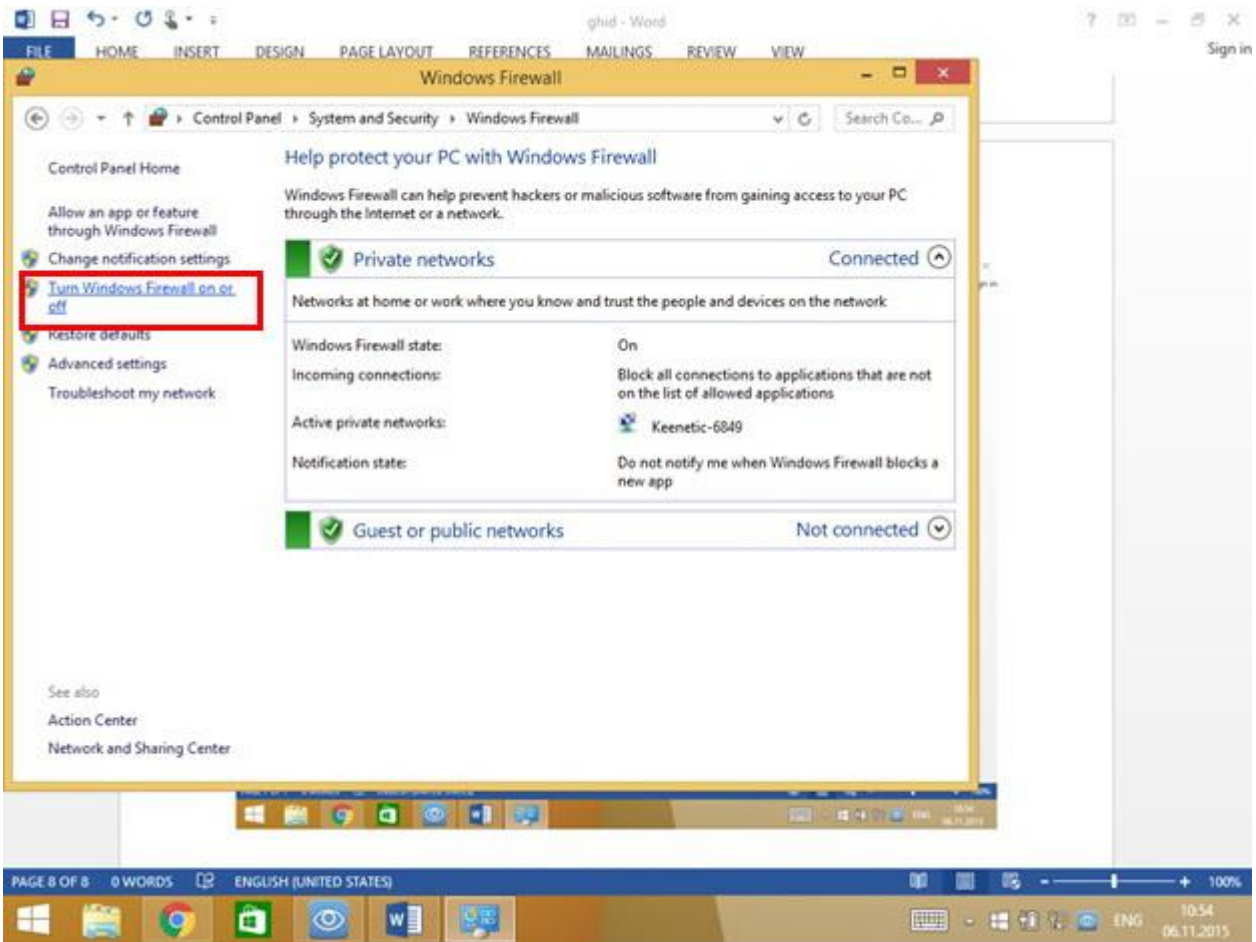
Bifam in felul urmator,salvam !



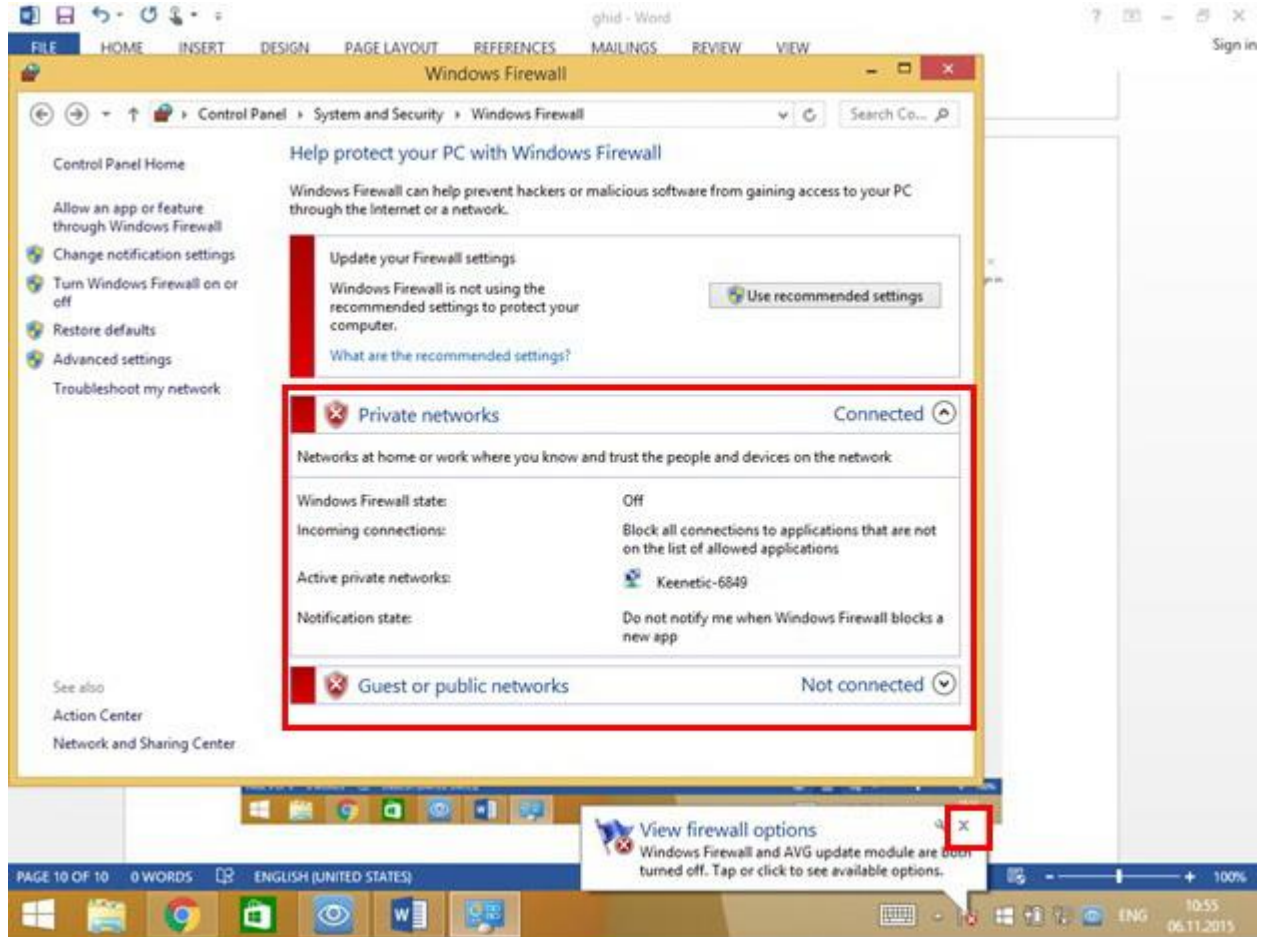


Dezactivam Firewall-ul pentru a nu bloca functionarea softului NetTop Vision !





Salvam ,ignoram mesajul !



Deasemene e necesar de dezactivat Windows Defender !

In Control Panel cautam Windows Defender ,il deschidem si scoatem bifa de la Real Time Protection.